



JINPU

Vertical Turret Milling Machines

USA



STANDARD

FEATURES

Tested Quality - ISO 9001 Certified
 3 and 5 Hp, 3-Phase 220/440VAC Spindle Motors
 Hard Chromed Powered Quill - Up and Down - Feed Select: 0.0015, 0.003, 0.006 in/rev



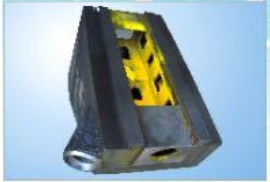
Extended Turret



COLUMN: box structure, increase rigidity

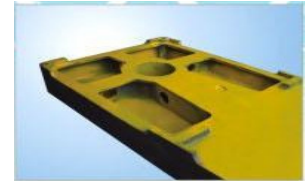
Tempered and Carburized Chrome Molybdenum Steel Spindle
 NSK or Nachi ABEC-7 Angular Contact Precision Spindle Bearings
 R8, NT30 or NT40 Spindle Tapers - Factory Tested To 0.0004" TIR
 Ram Rotation (Deg) 90 left/right, 0-45 front/back*, 360 Orbital
 Induction Hardened & Precision Ground Table & Ways
 PBC-2 Phosphor Bronze Backlash Adjustable Lead Screw Nuts
 Full Length Precision Ground Gibbs with Double End Adjustments
 Turcite-B X&Y Saddle Ways - Precision Hand Scraping Throughout

Widest Knee - T-Slots (3 x 0.63 x 2.48") - Way Guards - Double Travel Locks
 Control Box with 110/220VAC Outlets - On/Off/E-Stop Switch Box and Indicator Light



KNEE: double wall structure,

Manual 1-Shot Lubrication System - Automatic Optional
 35 Watt Halogen Work Lamp - 50 Watt Optional
 Draw Bar, Tool Box With Operation Manual And Test Data
 Includes Leveling Pads - Lift Eye - Rear Ram Eye
 SC250 Superior Rigidity - Uniquely Structured Castings



BOTTOM: box structure,

ONE YEAR LIMITED WARRANTY

Specifications subject to change without notice
 See dealer for details

X-Y-Knee Quill - 5" Travels M2-M5, M6 - 4.92" * No 45 Degree Tilt on M6 - Strong Type Head

Table/Travels	9x42	9x50	10x50	10x52	10x54	11x54	12x54	12x58	RAM
M2-3Hp-2310Lb	28x12x13	36x12x13							13
M3-3Hp-2640Lb			33x15x15	35x15x15	37x15x15				21
M4-3Hp-3080Lb	Box Ways			34x16x16	36x16x16				21
M5-5Hp-3300Lb	Box Way - Y Axis					35x17x18	35x16x18		24
M6-5Hp-3630Lb	Box Ways - Power Knee - NT40						35x18x18	39x18x18	24
Travels Listed are Without Power Feed									

STOCK OPTIONS

16 Speed Step Pulley Spindle Head
 M2-M5: 70-4620 RPM - R8/NT30
 M6: 80 - 5440 RPM - NT40

Variable Speed Spindle Head
 M2-M5: 60-4200 RPM - R8/NT30
 M6: 60-3600 RPM - NT40

UPGRADES & ACCESSORIES:

- Power Feeds
- Digital Readouts
- CNC Ready Ball Screws
- 50 Watt Halogen H3 Work Lamp
- Coolant System With Chip Pan
- Auto Lube System
- Power Drawbar
- NT30, NT40 Spindle Tapers
- Vices, Collet and Clamping Kits
- Safety Hand Wheels
- Cutter Shields



Established in 1986 in Hong Kong, Kin Ah Industries has expanded to a group of four machine tool manufacturing facilities in China including two foundries covering over 100 acres and 60,000 square meters of floorspace. A fully family owned and operated manufacturing group, Kin Ah manufactures Manual Milling Machines under the Jinpu label and CNC Machines under the SAN label. Core capabilities include Iron Casting, Heat Treatment, Machining, and Precision Assembly. Products include Vertical Turret Milling Machines, Bed Type Milling Machines, CNC Milling Machines, Machining Centers, CNC Lathes, EDM and Accessories.

Imported Exclusively For:



P.O. Box 3071 - 9728 Variel Ave. - Chatsworth, CA 91311

Toll Free: (800) 532-2636 • Phone: (818) 727-0957 • Fax: (818) 727-1073

<http://www.candomachinery.com/Mills.html#jinpu>

sales@candomachinery.com