

JINPU Vertical Turret Milling Machine

Manual Knee Mill - 10"x52" Table - 3Hp - Box Ways

CDM4-S / CDM4-V



Imported Exclusively For:

CAN-DO
MACHINERY SALES

*Machinery, Measurement Systems,
Tools & Accessories*

P.O. Box 3071 - 9728 Variel Ave. - Chatsworth, CA 91311

Toll Free: (800) 532-2636 • Phone: (818) 727-0957 • Fax: (818) 727-1073

<http://www.candomachinery.com/Mills.html#jinpu>

sales@candomachinery.com

STANDARD

FEATURES

Tested Quality - ISO 9001 Certified
3 Hp 3-Phase 220/440VAC Spindle Motors
Hard Chromed Powered Quill - Up and Down - Feed Select: 0.0015, 0.003, 0.006 in/rev
Tempered and Carburized Chrome Molybdenum Steel Spindle
NSK or Nachi ABEC-7 Angular Contact Precision Spindle Bearings
R8 or NT30 Spindle Taper - 100% Factory Test Data Provided
Ram Rotation (Deg) 90 left/right, 0-45 front/back*, 360 Orbital
Induction Hardened & Precision Ground Table & Ways
PBC-2 Phosphor Bronze Backlash Adjustable Lead Screw Nuts
Full Length Precision Ground Gibbs with Double End Adjustments
Turcite-B X&Y Saddle Ways - Precision Hand Scraping Throughout
Widest Knee - T-Slots (3 x 0.63 x 2.48") - Way Guards - Double Travel Locks
Control Box with 110/220VAC Outlets - On/Off/E-Stop Switch Box and Indicator Light

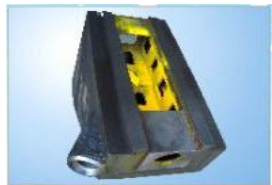


Extended Turret

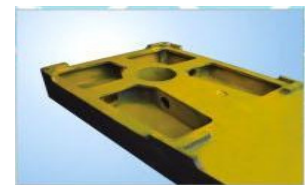


COLUMN: box structure, increase rigidity

Manual 1-Shot Lubrication System - Automatic Optional
35 Watt Halogen Work Lamp - 50 Watt Optional
Draw Bar, Tool Box With Operation Manual And Test Data
Includes Leveling Pads - Lift Eye - Rear Ram Eye
SC250 Superior Rigidity - Uniquely Structured Castings



KNEE: double wall structure.



BOTTOM : box structure.

ONE YEAR LIMITED WARRANTY

Specifications subject to change without notice
 See dealer for details

Machine Travels(inch)	X	BOX WAY		Quill	RAM
		Y	Knee		
No Power Feed	34.25	16.93	16.93	5	21.65
With Power Feed	29.53	16.93	16.93	5	21.65

Base Machine Weight 3,080 Lb

Machine Dimensions 63"x69"x87"

Model # **CDM4-S**

16 Speed Step Pulley Spindle Head
 70 - 4620 RPM

STOCK OPTIONS

Model # **CDM4-V**

Variable Speed Spindle Head
 60-4200 RPM

UPGRADES & ACCESSORIES:

- Power Feeds
- Digital Readouts
- CNC Retrofit Kits
- 50 Watt Halogen H3 Work Lamp
- Coolant System With Chip Pan
- Auto Lube System
- Power Drawbar
- NT30, NT40 Spindle Tapers
- Vices, Collet and Clamping Kits
- Safety Hand Wheels
- Cutter Shields



Established in 1986 in Hong Kong, Kin Ah Industries has expanded to a group of four machine tool manufacturing facilities In China including two foundries covering over 100 acres and 60,000 square meters of floorspace. A fully family owned and Operated manufacturing group, Kin Ah manufactures Manual Milling Machines under the Jinpu label and CNC Machines under the SAN label. Core capabilities include Iron Casting, Heat Treatment, Machining, and Precision Assembly. Products include Vertical Turret Milling Machines, Bed Type Milling Machines, CNC Milling Machines, Machining Centers, CNC Lathes, EDM and Accessories.

P.O. Box 3071 - 9728 Variel Ave. - Chatsworth, CA 91311

Toll Free: (800) 532-2636 • Phone: (818) 727-0957 • Fax: (818) 727-1073

<http://www.candomachinery.com/Mills.html#jinpu>
sales@candomachinery.com